



- Description
- Flow rates
- Dimensions
- Functions
- Connection types
- Max tightening torque BSP
- Max tightening torque UNF
- Fluids and materials
- Ordering number

## The HC5 miniBOOSTER



**HC5 versions:** 11 different intensification factors

**P<sub>IN</sub>:** 20 – 200 bar (inlet pressure)

**P<sub>H</sub>:** 800 bar maximum (outlet pressure)

**P<sub>RETURN</sub>:** As low as possible (Return pressure to tank)

**Intensification ratios:**  $P_H = (P_{IN} - P_{Return}) \cdot i$   
 (Intensification)

**Mounting:** Inline tube

**Accessories:** Pilot operated dumpvalves incorporated  
 High Pressure in two directions

### ▲ Description of the HC5 miniBOOSTER hydraulic intensifier

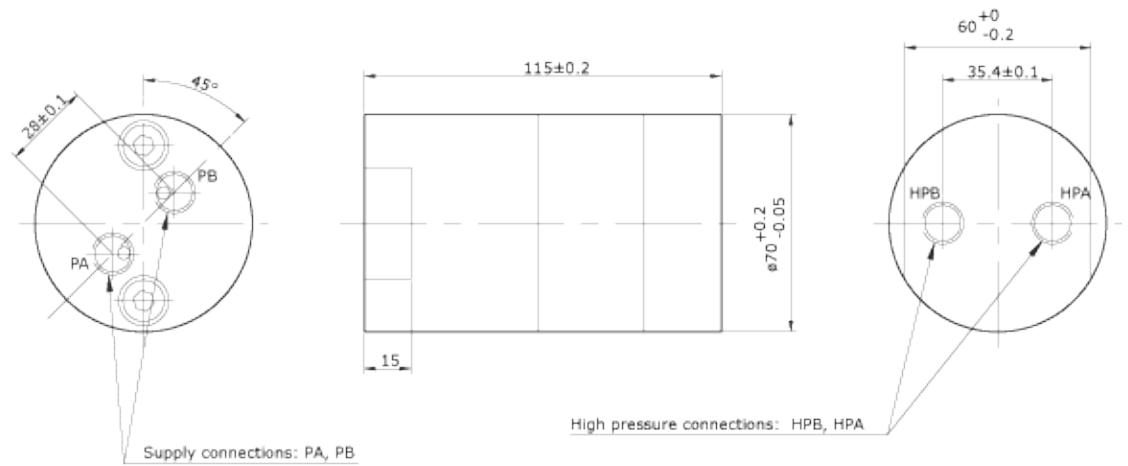
The HC5 is a double acting miniBOOSTER incorporating two separate intensification circuits. As [the Function Diagram](#) indicates, changing the position of the control valve CV switches intensification from one circuit to another.

It is ideal for use in [applications](#) where high pressure is required in separate activation steps such as double acting cylinders, combination cutter spreader tools, etc. Like the [HC2](#), the HC5 is a compact unit weighing only 3.0 kg.

### ▲ Flow Rates

Intensification factor <i>i</i>	Max. outlet flow l/min	Max. inlet flow l/min
1.2	1.2	8.0
1.5	1.0	8.0
2.0	2.0	12.0
2.8	2.2	13.0
3.2	2.5	15.0
4.0	2.0	14.0
5.0	1.6	14.0
6.6	1.3	13.0
9.0	0.9	13.0
13.0	0.6	12.0
20.0	0.3	12.0

▲ **Dimensions**



	PA/PB	HPA/HPB
1	1/4" BSP	1/4" BSP
2	7/16"-20 UNF	9/16"-18 UNF

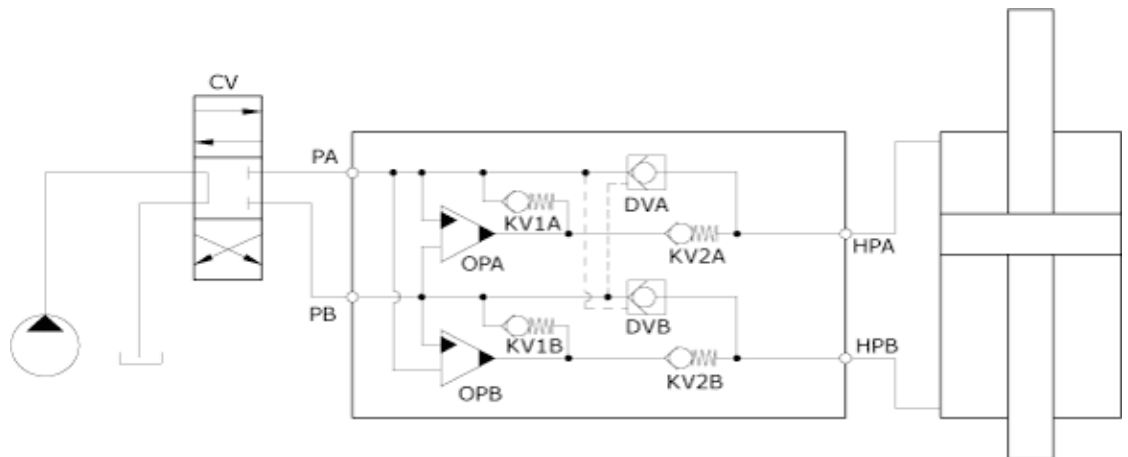
5-120 / 02.04.04

▲ **Functions**

The basic operation is illustrated in the function diagram. Oil is fed through the directional valve CV to the IN port, flowing freely through the check valves KV1, KV2 and DV to the high pressure side H. In this condition maximum flow through the booster is achieved giving a fast forward function.

When pump pressure is reached on the high pressure side H, valves KV1, KV2 and DV will close. The end pressure will be achieved by the oscillating pump unit OP. The unit will automatically stall when end pressure on high pressure side H is reached. If there is a pressure drop on the high pressure side due to consumption or leakage, the OP valve will automatically operate to maintain the end pressure.

*Function Diagram*



5-105 / 13.08.01

▲ **Connection types**

Connection	IN / R	H
1	1/4" BSP	1/4" BSP
2	7/16-18 UNF	9/16-18 UNF

▲ **Max. tightening torque BSP**

	IN / R	H
	1/4" BSP	1/4" BSP
with steel washer	4.0 da/Nm	4.0 da/Nm
with aluminium washer	3.0 da/Nm	-
with cutting edge	4.0 da/Nm	4.0 da/Nm

▲ **Max. tightening torque UNF**

	IN / R	H
	7/16-18" UNF	9/16-18" UNF
with o-ring	2.0 da/Nm	3.5 da/Nm

▲ **Fluids and materials**

Please see [General Specifications](#).

▲ **Ordering a HC5**

Ordering example of a HC5 with iA = 4.0 and iB = 5.0,  
and BSP connections: HC5 - 4.0 - 5.0 - 1



Model	Intensification, iA	Intensification, iB	Connections
HC5	your selection...	your selection...	your selection...
	see <a href="#">flow rate table</a>	see <a href="#">flow rate table</a>	1
			2