



- [Description](#)
- [Flow rates](#)
- [Dimensions](#)
- [Functions](#)
- [Connection types](#)
- [Max tightening torque BSP](#)
- [Max tightening torque UNF](#)
- [High pressure plate](#)
- [Fluids and materials](#)
- [Ordering number](#)

The HC8 miniBOOSTER



HC8 versions: 5 different intensification factors

P_{IN}: 20 – 200 bar (inlet pressure)

P_H: 2,000 bar maximum (outlet pressure)

P_{RETURN}: As low as possible (Return pressure to tank)

Intensification ratios: $P_H = (P_{IN} - P_{Return}) \cdot i$
(Intensification)

Mounting: Inline tube

Accessories: Pilot operated dump valve incorporated
Pressure gauge/transducer connection available

A model = no dump valve

B model = with dump valve

G model = direct proportionally controlled

▲ Description of the HC8 miniBOOSTER hydraulic intensifier

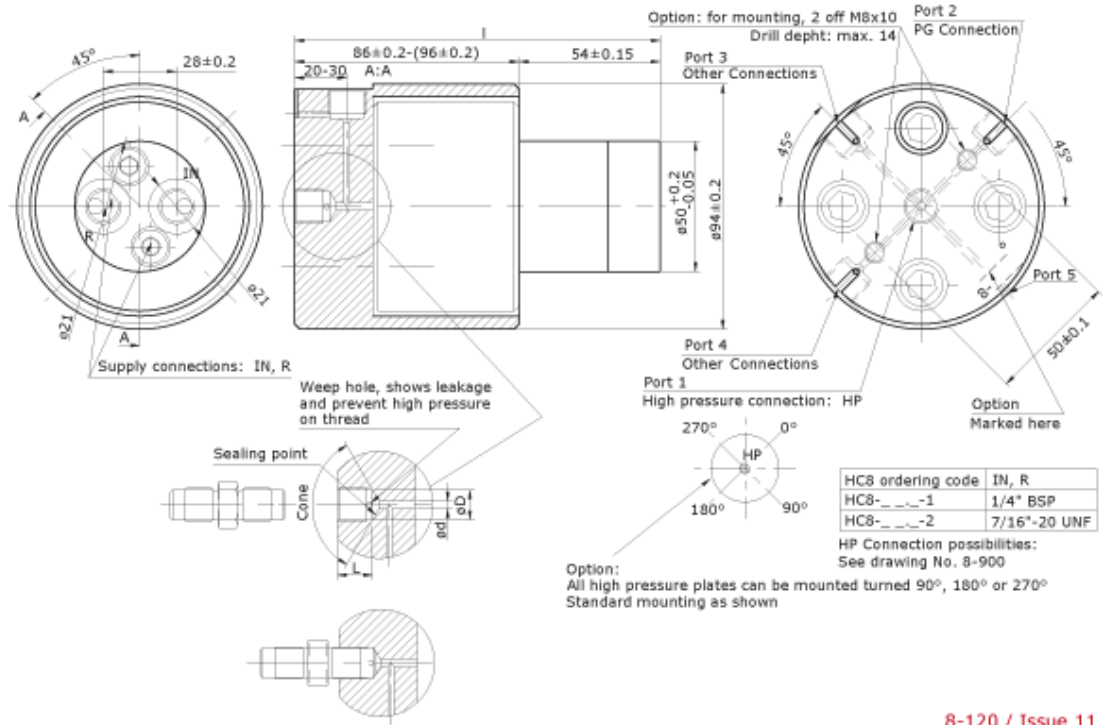
The HC8 was developed for [applications](#) where intensified pressure up to 2,000 bar are required. Operating like the [HC2](#), the HC8 is a unique, self contained device which boosts inlet pressure by up to a 20:1 ratio without the use of external power.

In addition, the HC8 maintains high pressure by automatically compensating for consumption of oil on the high pressure side. High pressure is directly proportional to inlet pressure. The HC8 is compact in size. The HC8 works at inlet pressure from 20 to 200 bar. Higher pressure is available on special request.

▲ Flow Rates

Intensification factor i	Max. outlet flow l/min	Max. inlet flow l/min
5.0	1.6	14.0
6.6	1.3	13.0
9.0	0.9	13.0
13.0	0.6	12.0
20.0	0.3	12.0

▲ **Dimensions**



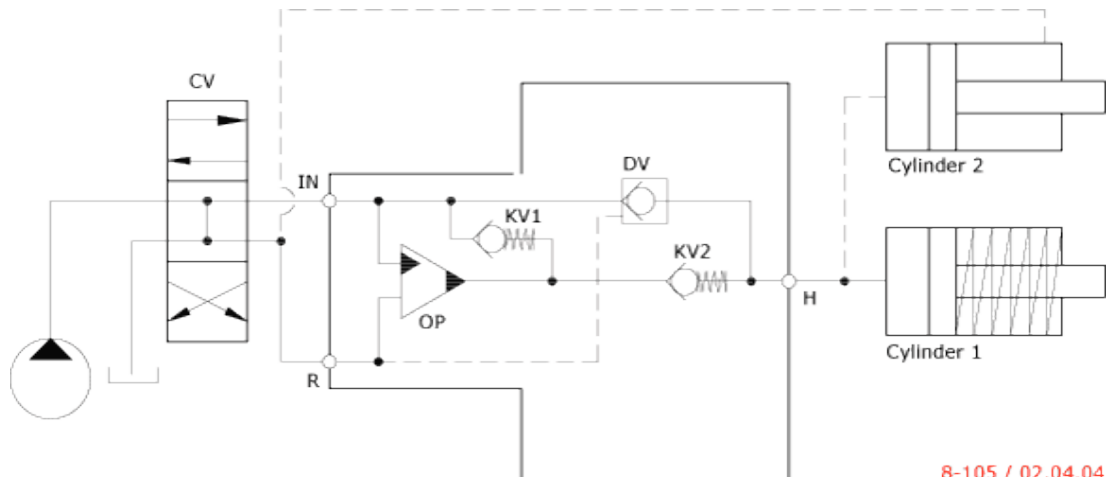
8-120 / Issue 11

▲ **Functions**

The basic operation is illustrated in the function diagram. Oil is fed through the directional valve CV to the IN port, flowing freely through the check valves KV1, KV2 and DV to the high pressure side H. In this condition maximum flow through the booster is achieved giving a fast forward function.

When pump pressure is reached on the high pressure side H, valves KV1, KV2 and DV will close. The end pressure will be achieved by the oscillating pump unit OP. The unit will automatically stall when end pressure on high pressure side H is reached. If there is a pressure drop on the high pressure side due to consumption or leakage, the OP valve will automatically operate to maintain the end pressure.

Function Diagram



8-105 / 02.04.04

▲ **Connection types**

Connection	IN / R
1	1/4" BSP
2	7/16-20 UNF

▲ **Max. tightening torque BSP**

	IN / R
	1/4" BSP
with steel washer	4.0 da/Nm
with aluminium washer	3.0 da/Nm
with cutting edge	4.0 da/Nm

▲ **Max. tightening torque UNF**

	IN / R
	7/16-18" UNF
with o-ring	2.0 da/Nm

▲ High pressure plate

Ordering Code	Port 1: HP-Connection		Port 2: PG-Connections		Port 3: Other Connections		Port 4: Other Connections		
	HP plate	Thread	Cone	Thread	Cone	Thread	Cone	Thread	Cone
8-281	1/2" BSP	120°	None	–	None	–	None	–	–
8-282	3/4" BSP	0°	None	–	None	–	None	–	–
8-283	M16 x 1.5	60°	None	–	None	–	None	–	–
8-284	1/4" BSP	120°	None	–	None	–	None	–	–
8-285	1/4" BSP	120°	9/16-18 UNF	60°	None	–	None	–	–
8-286	3/4" BSP	0°	9/16-18 UNF	60°	None	–	None	–	–
8-287	1/4" BSP	120°	9/16-18 UNF	60°	9/16-18 UNF	60°	None	–	–
8-288	9/16-18 UNF	60°	9/16-18 UNF	60°	None	–	None	–	–
8-289	1/4" BSP	120°	M14 x 1.5	60°	None	–	None	–	–
8-290	1/4" BSP	120°	M16 x 1.5	60°	None	–	None	–	–
8-291	1/4" BSP	120°	M15 x 1.0	0°	None	–	None	–	–
8-292	M16 x 1.5	60°	M16 x 1.5	60°	None	–	None	–	–
8-293	1/2" BSP	60°	None	–	None	–	None	–	–
8-294	M16 x 1.5	60°	9/16-18 UNF	60°	M16 x 1.5	60°	None	–	–
8-295	M16 x 1.5	60°	9/16-18 UNF	60°	None	–	None	–	–
8-296	M20 x 1.5	60°	None	–	None	–	None	–	–
8-297	1/4" BSP	120°	9/16-18 UNF	60°	M14 x 1.5	60°	None	–	–
8-298	1/4" BSP	120°	9/16-18 UNF	60°	M16 x 1.5	60°	None	–	–
8-299	3/4-16 UNF	60°	None	–	None	–	None	–	–
8-300	M22 x 1.5	60°	None	–	None	–	None	–	–
8-320	M22 x 1.5	60°	M22 x 1.5	60°	None	–	None	–	–
8-321	1/4" BSP	120°	1/4" BSP	120°	None	–	None	–	–
8-322	M22 x 1.5	60°	9/16-18 UNF	60°	M22 x 1.5	60°	None	–	–
8-323	1/4" BSP	120°	9/16-18 UNF	60°	1/2"-20 UNF	60°	None	–	–
8-324	M22 x 1.5	60°	9/16-18 UNF	60°	None	–	None	–	–
8-325	1/4" BSP	120°	None	–	9/16-18 UNF	60°	9/16-18 UNF	60°	–

▲ **Fluids and materials**

Please see [General Specifications](#).

▲ **Ordering a HC8**

Ordering example of a HC8 with $i = 13.0$,
DV incorporated and BSP connections: HC8 - 13.0 - B - 1

Please note!

High pressure plate ordering code - [see table](#)

Other high pressure connections on request.

Model	Intensification, i	Dump Valve	Connections
HC8	your selection...	your selection...	your selection...
	see flow rate table	A = (no) / A model	1
		B = (yes) / B model	2
		G = (proportional) / G model	

ISO 9001
BUREAU VERITAS
Certification

