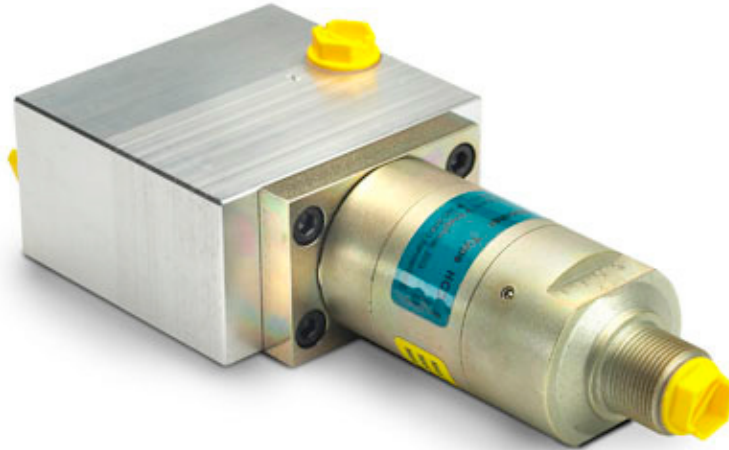




- [Description](#)
- [Dimensions](#)
- [Function diagram](#)
- [Ordering](#)

Filter Housing

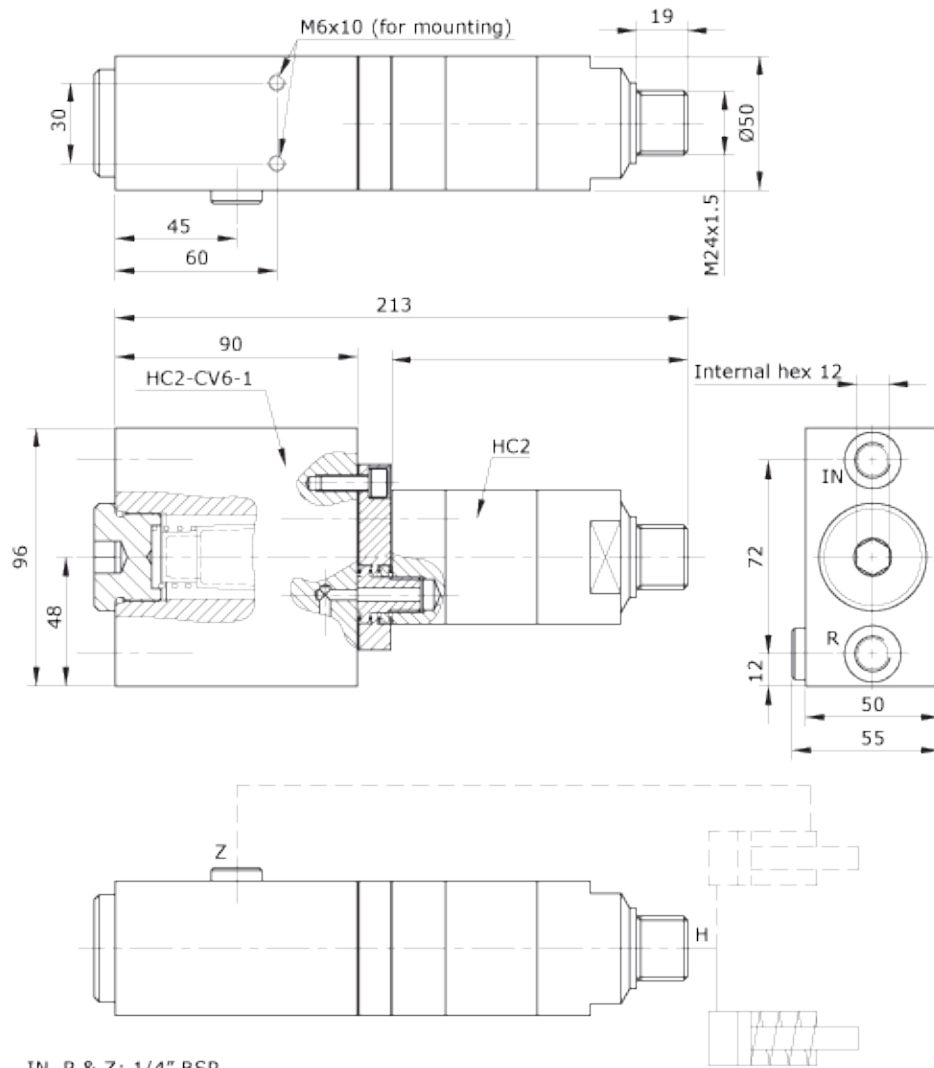


▲ Description

This in-line filter provides protection in hydraulic systems up to 200 bar. It is similar in design and performance to filter models FIL-52T; FIL-53T and FIL-54T with the added advantage that it can be mounted directly on the booster in a very compact assembly. The built-in check valves protect the filter from return flow. The standard bronze element filter is 10 micron.

Operating temperatures: 0°C to 100°C

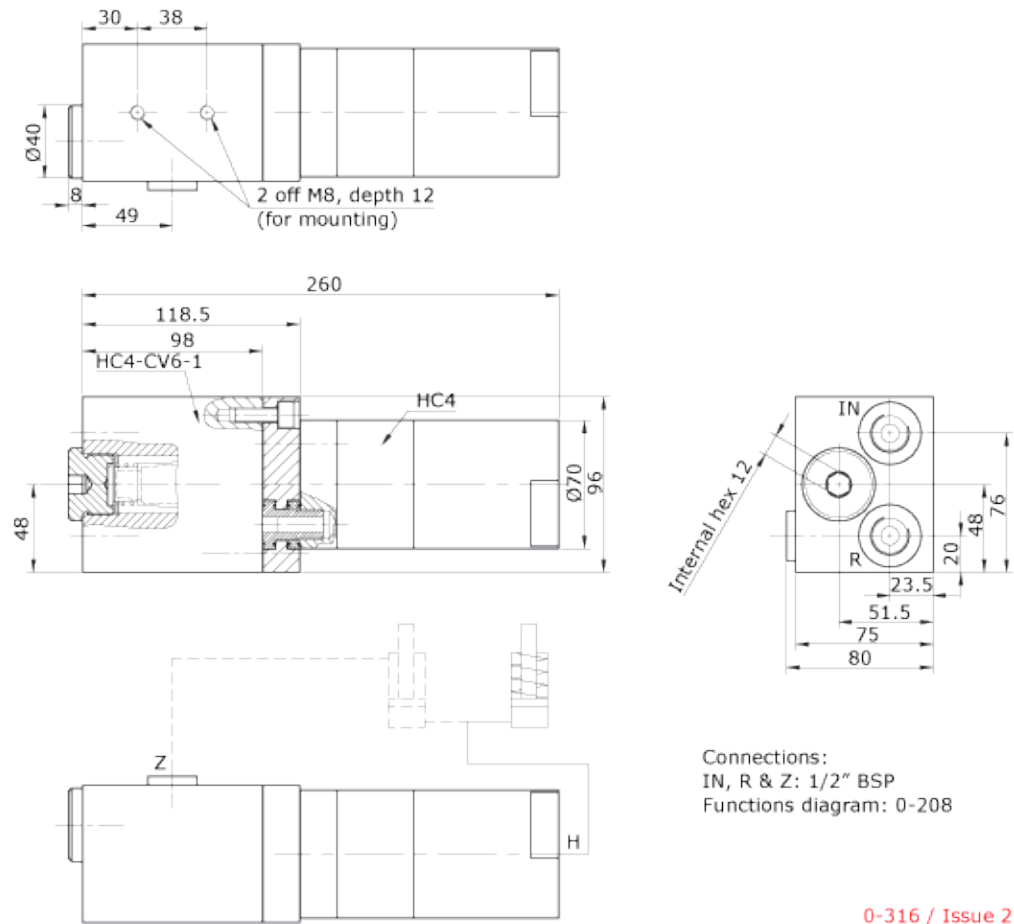
▲ **Dimensions (Filter Housing for HC2-CV6)**



IN, R & Z: 1/4" BSP
Functions diagram: 0-208

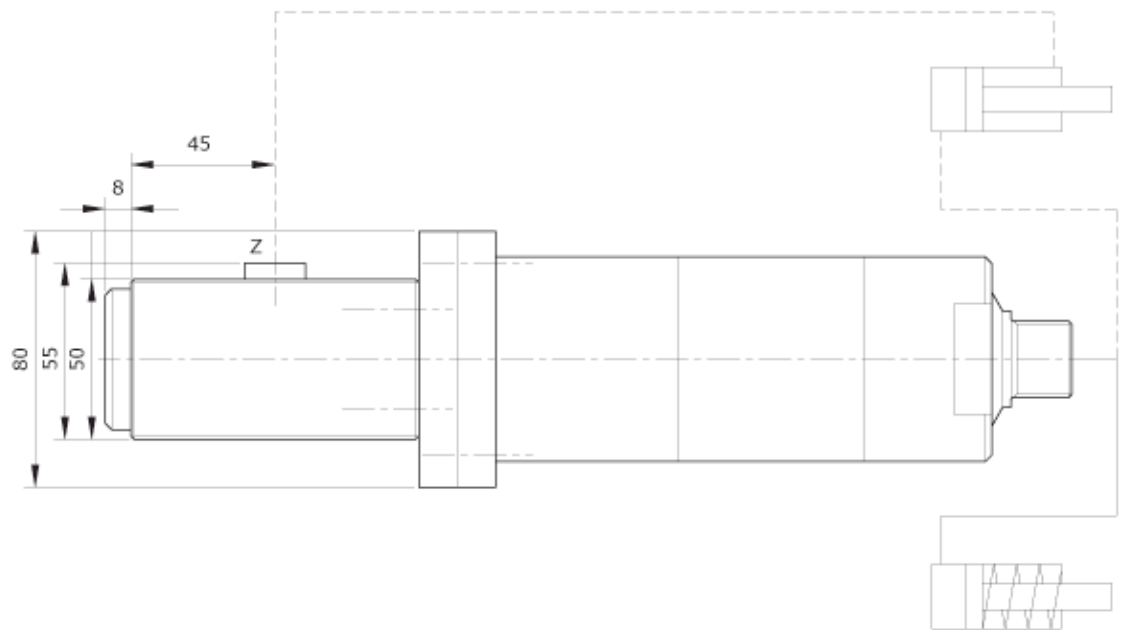
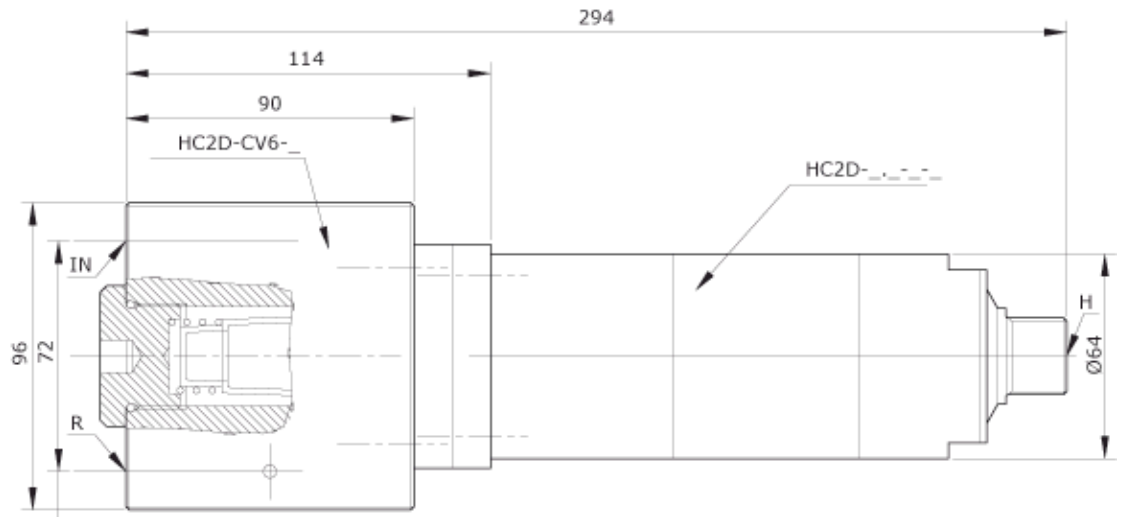
0-311 / Issue 1

▲ **Dimensions (Filter Housing for HC2D-CV4)**



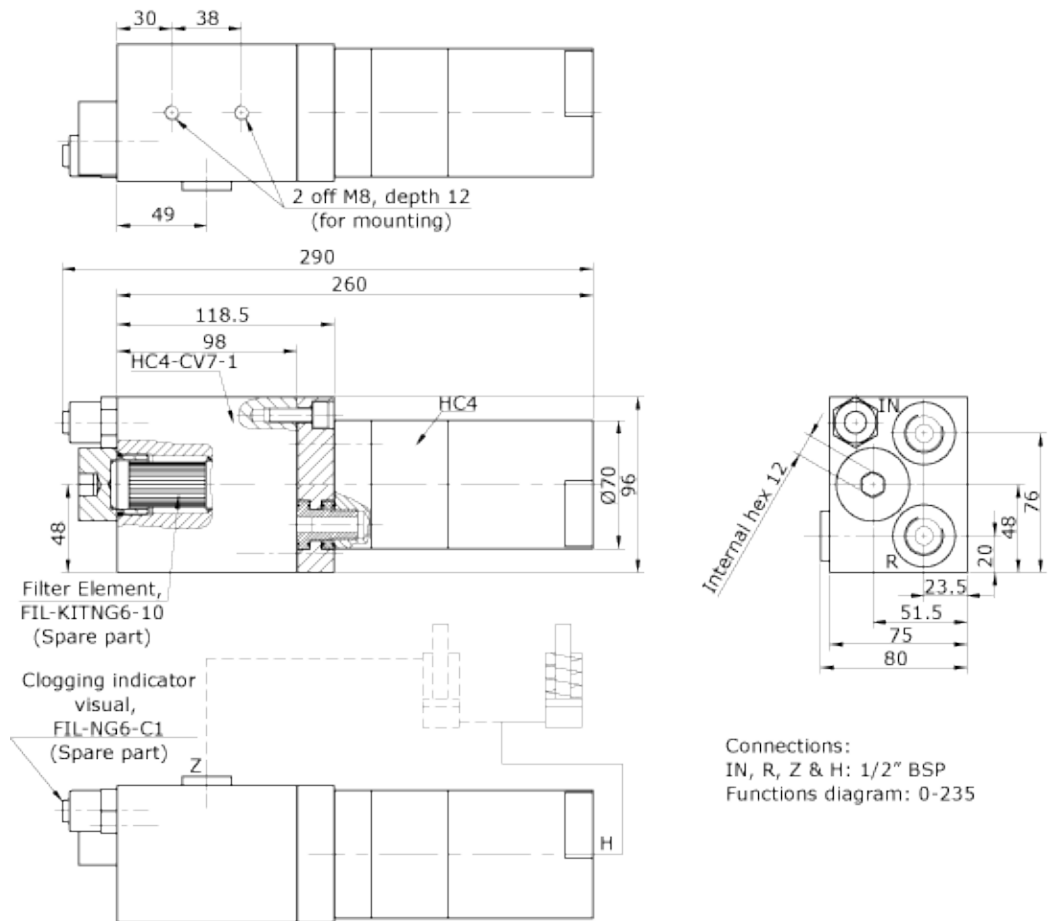
Connections:
 IN, R & Z: 1/2" BSP
 Functions diagram: 0-208

▲ Dimensions (Filter Housing for HC2D-CV6)

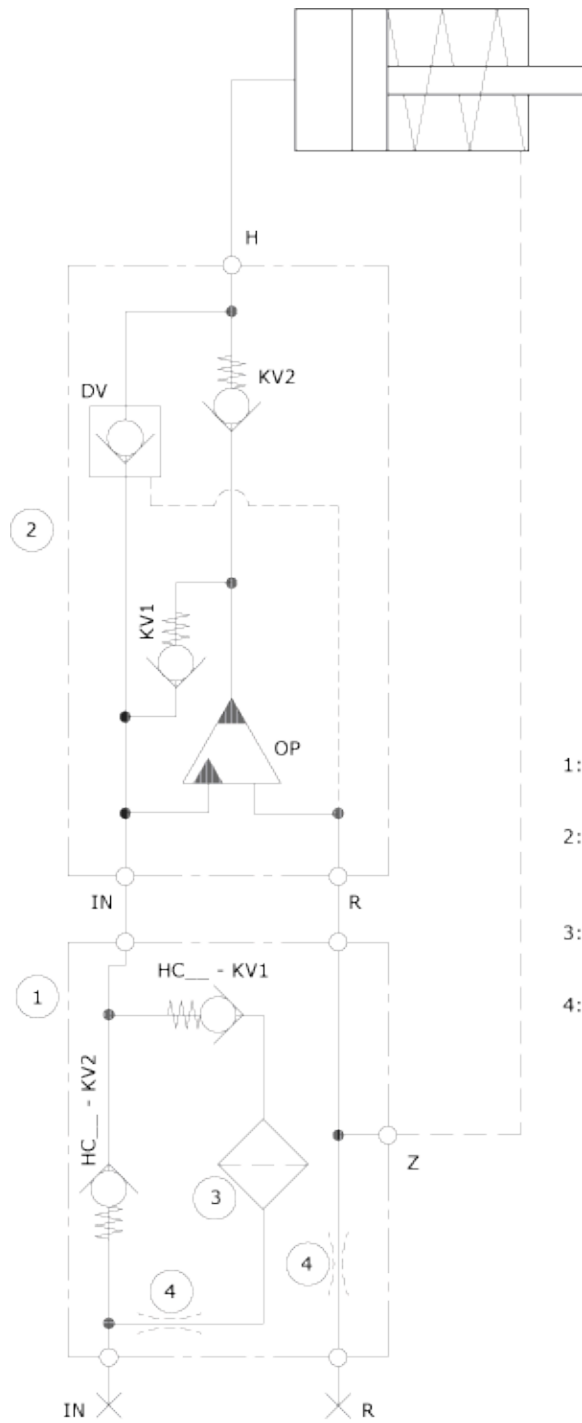


0-343 / 23.05.05

▲ **Dimensions (Filter Housing for HC4-CV7)**



▲ Function diagram



- 1: Filter housing:
HC__ - CV6 -__ (Max. 200 bar inlet)
- 2: Hydraulic intensifier:
HC__ - . . . - B - __
- 3: (Sparepart):
Filter Kit: Fil-KIT-10
- 4: (Option):
2 off orifices Ø __.__; __ - __ L/min.

▲ **Ordering**

Please note: The set includes a HC2, HC4 Manifold Adapter Kit

Order no.	In / Out	Overall length	Dia.	Weight	Max. pressure	Element and seal
HC2-CV6-1	1/4" BSP	212 mm	96 mm	1.1 kg	200 bar	FIL-KIT-10
HC4-CV6-1	1/2" BSP	212 mm	96 mm	1.8 kg	200 bar	FIL-KIT-10
HC2D-CV6-1	1/4" BSP	294 mm	96 mm	1.5 kg	200 bar	FIL-KIT-10
HC4-CV7-1	1/2" BSP	260 mm	96 mm	2.8 kg	200 bar	FIL-KITNG6-10
FIL-KIT-10	-	-	-	-	-	-

ISO 9001
BUREAU VERITAS
Certification

