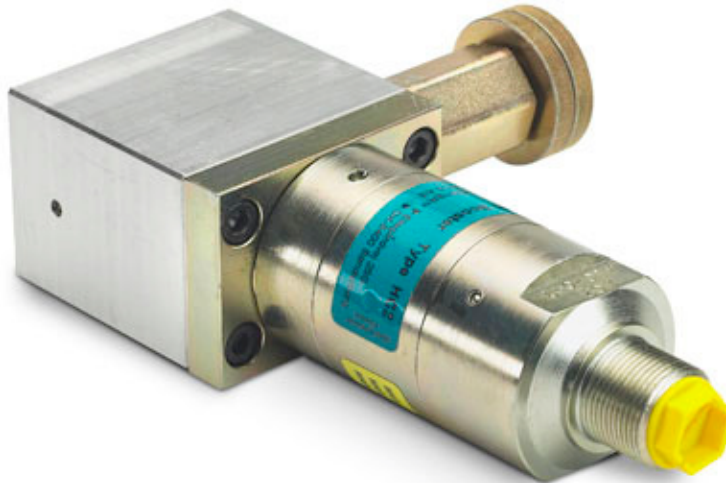




- [Description](#)
- [Dimensions](#)
- [Functions](#)
- [Ordering](#)

Valve Housing CV2 – with PRV



The miniBOOSTER Valve Housing is used for mounting various accessory components directly to the miniBOOSTER.

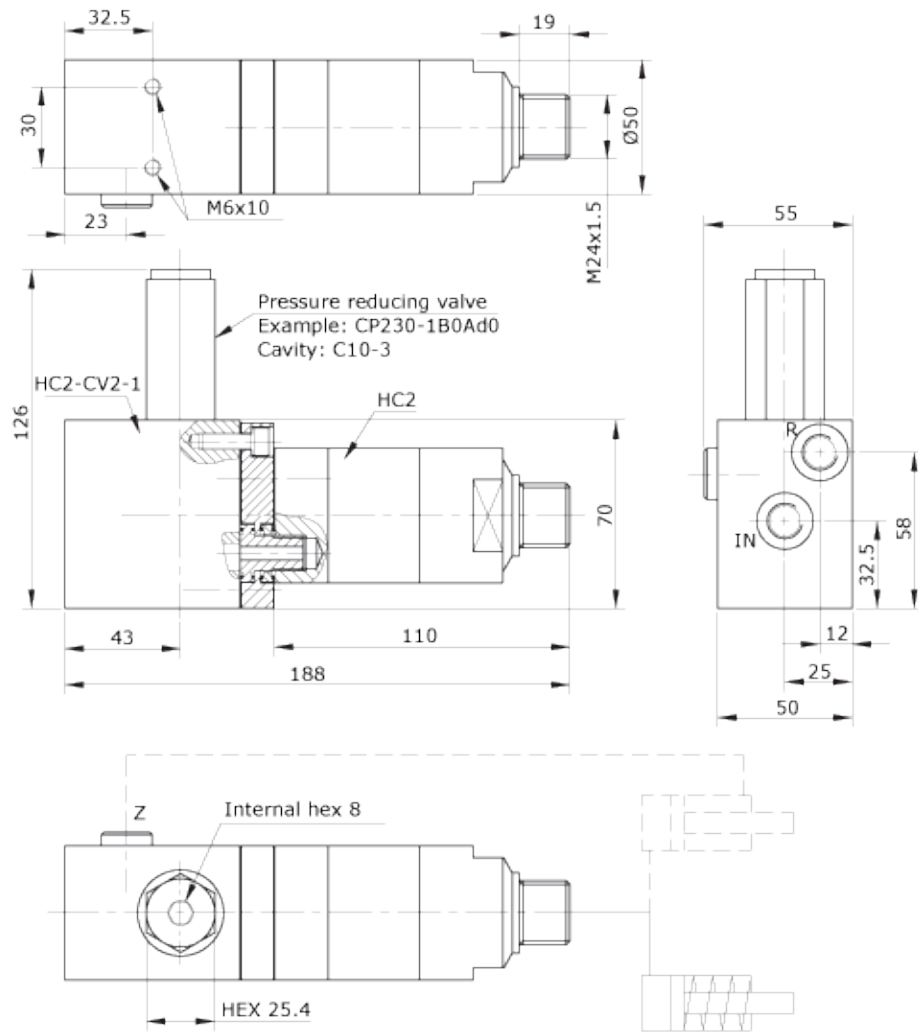
This saves space and reduces the cost of using stand alone components for these functions.

The valve housing and components selected will be factory mounted, tested and sized based on the model of miniBOOSTER selected. Housing material, aluminum.

▲ Description

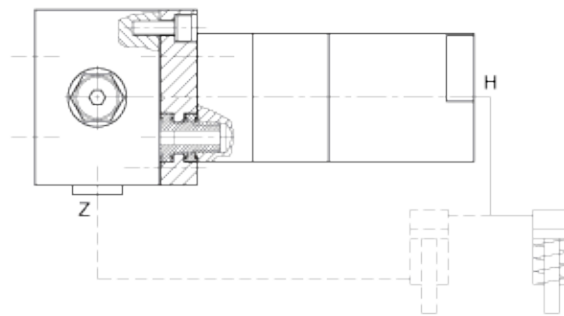
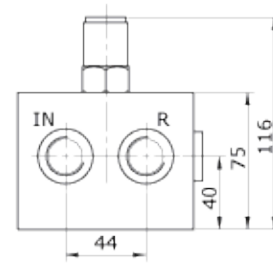
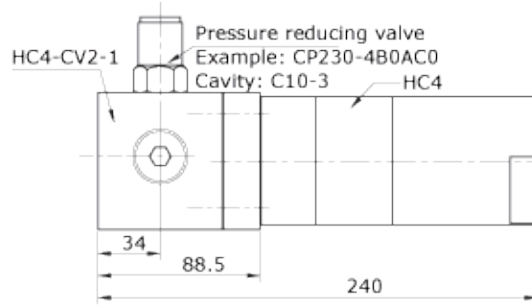
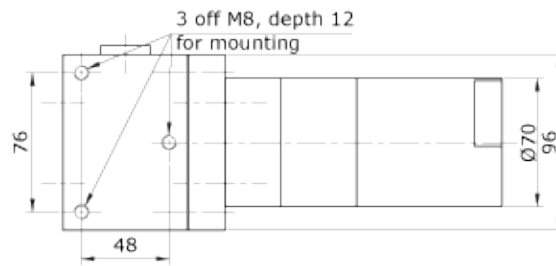
The CV2 incorporates a Pressure Reducing Valve (PRV) to control inlet pressure to the miniBOOSTER and an option of orifices to reduce inlet flow to the maximum allowed for the intensification ratio selected.

▲ **Dimensions (Valve Housing CV2 for HC2, HC7 & HC8)**



IN, R & Z: 1/4" BSP
Function diagram: 0-204

▲ **Dimensions (Valve Housing CV2 for HC4)**



Connections:
IN, R & Z: 1/2" BSP
Functions diagram: 0-204

0-331 / Issue 3

▲ **Ordering a Valve Housing CV2 for HC2**

Example of ordering a complete unit:

1 off Valve housing HC2 – CV2 – 1

1 off Pressure reducing valve CP230-1B0AD0, cavity: C10-3

1 off miniBOOSTER HC2 – 4.0 – B – 1

Model		Valve House		Connections
your selection...	—	CV2	—	your selection...
For HC2, HC7 and HC8				1 = 1/4" BSP
				2 = 7/16 - 20 UNF
HC4				1 = 3/8" BSP
				2 = 9/16 - 18 UNF

ISO 9001
BUREAU VERITAS
Certification

