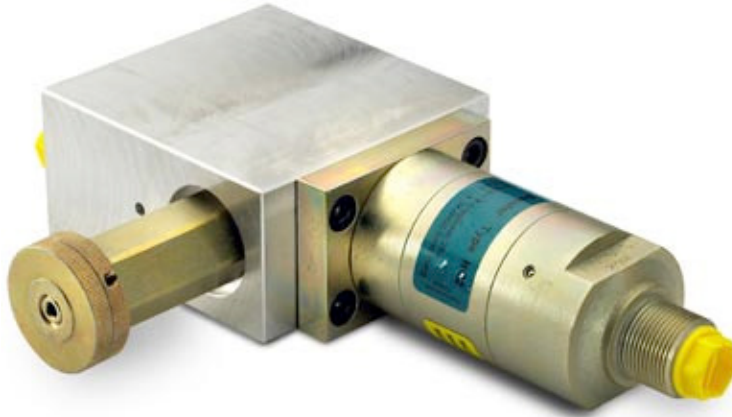




- [Description](#)
- [Dimensions](#)
- [Functions](#)
- [Ordering](#)

Valve Housing CV4 – with Filter & PRV



The miniBOOSTER Valve Housing is used for mounting various accessory components directly to the miniBOOSTER.

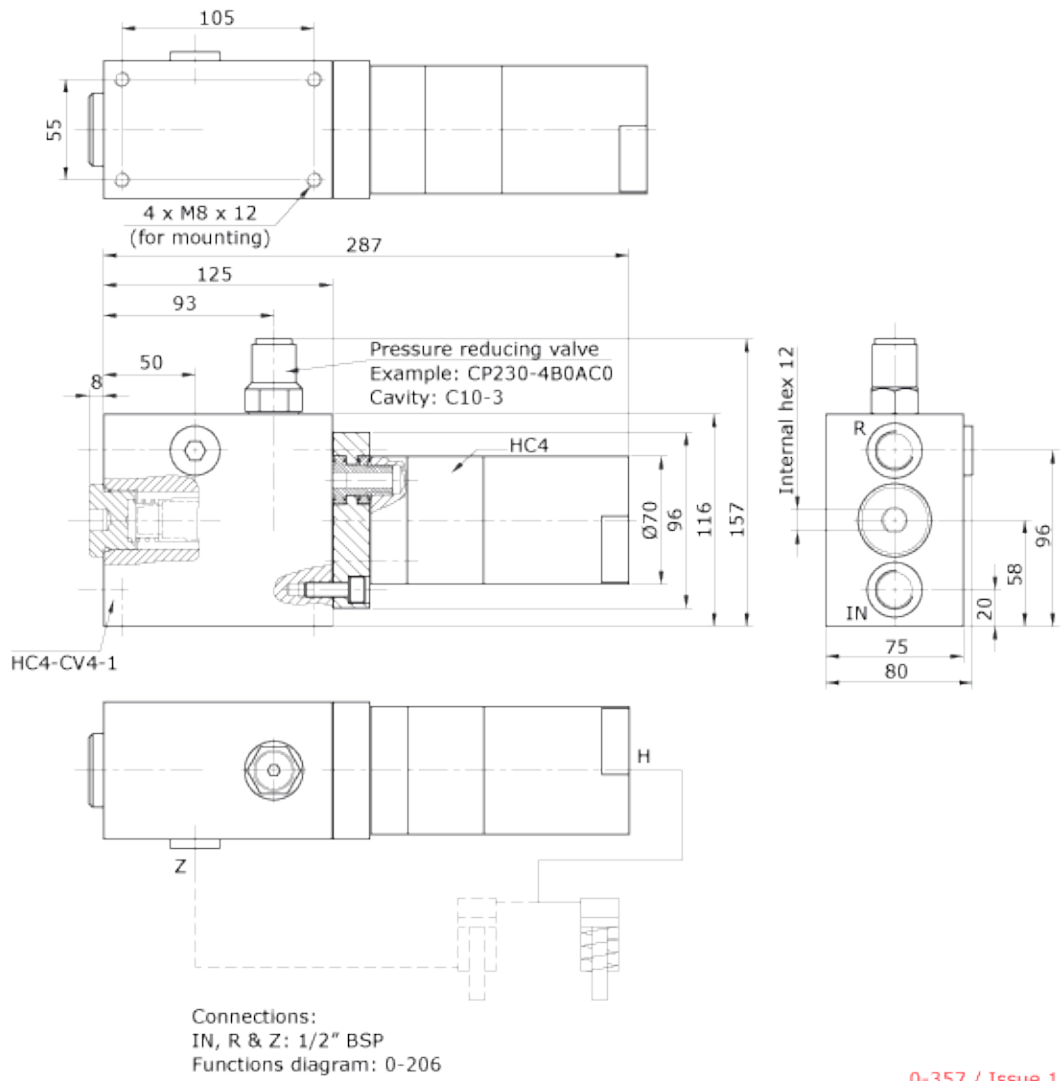
This saves space and reduces the cost of using stand alone components for these functions.

The valve housing and components selected will be factory mounted, tested and sized based on the model of miniBOOSTER selected. Housing material, aluminum.

▲ Description

The CV4 incorporates a 10 micron filter element to protect the miniBOOSTER, a Pressure Reducing Valve (PRV) to control inlet pressure to the miniBOOSTER and an optimal orifice to reduce inlet flow to the maximum allowed for the intensification ratio selected. Check valves protect the filter from backflow during the dump cycle.

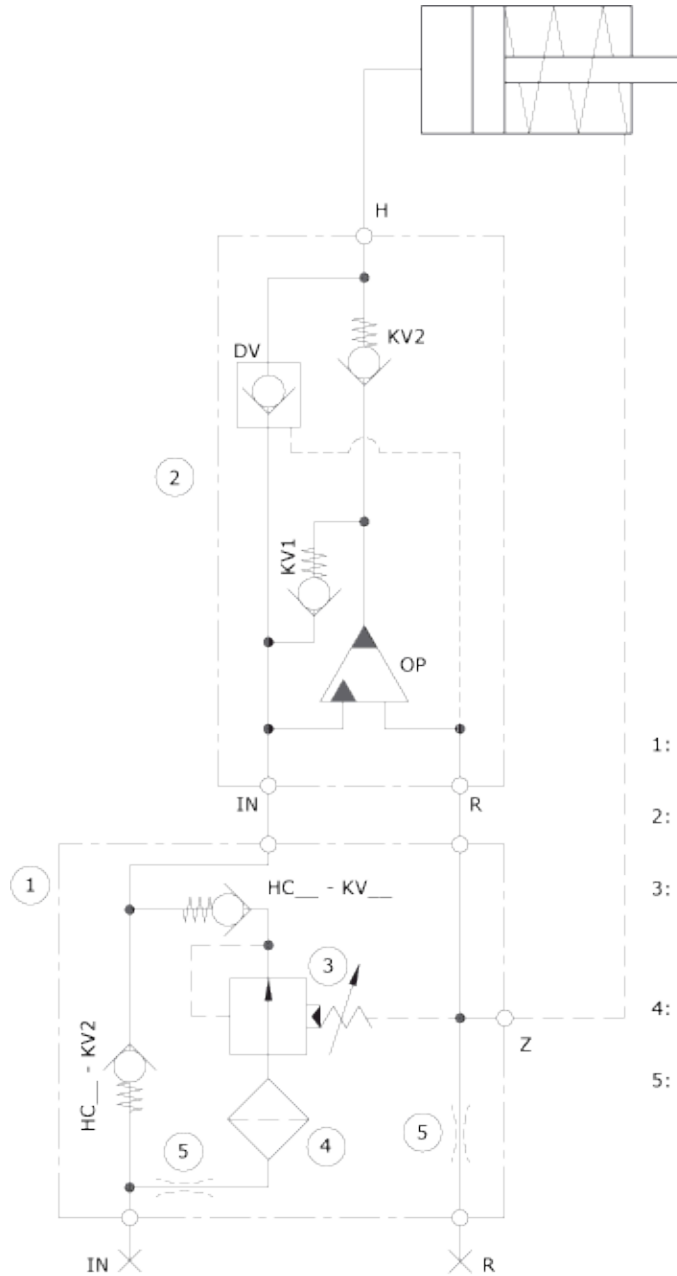
▲ **Dimensions (Valve Housing CV4 for HC4)**



▲ **Functions**

Function Diagram

1. Orifice(s) (Optional)
2. 10 micron Filter Element
3. Check valve
4. PRV Cartridge
5. Check valve
6. Housing
7. HC2, HC4, HC7 or HC8



- 1: Valve Housing:
HC__ - CV4 -__ (Max. 200 bar inlet)
- 2: Hydraulic intensifier:
HC__ - __ . __ - B - __
- 3: Pressure reducing valve:
Example:
CP230-4B0AC0 (Range: 28-207 bar)
Cavity: C10-3
- 4: (Sparepart):
Filter Kit: Fil-KIT-10
- 5: (Option):
2 off orifices Ø __. __; __ - __ L/min.

▲ **Ordering a Valve Housing CV4 for HC2**

Example of ordering a complete unit:

1 off Valve housing HC2 – CV4 – 1

1 off Pressure reducing valve CP230-4B0AC0, cavity: C10-3

1 off miniBOOSTER HC2 – 4.0 – B – 1

Spare Part Filter Element FIL-KIT-10



Model	Valve House	Connections
your selection...	CV4	your selection...
For HC2, HC7 and HC8		1 = 1/4" BSP 2 = 7/16 - 20 UNF
HC4		1 = 3/8" BSP 2 = 9/16 - 18 UNF