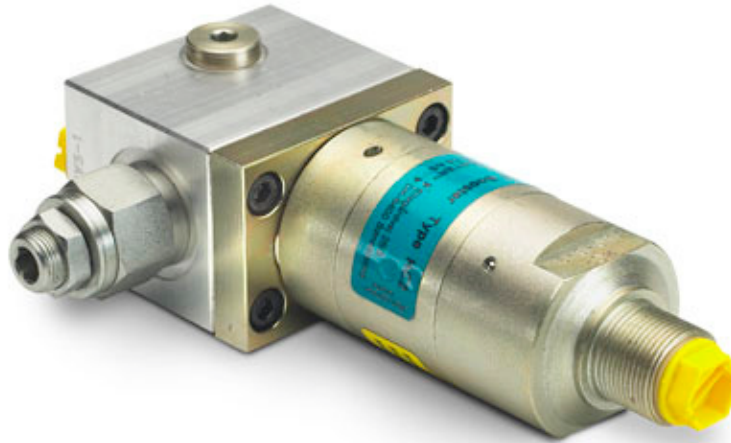




- [Description](#)
- [Dimensions](#)
- [Functions](#)
- [Ordering](#)

## Valve Housing CV5 – with Sequence Valve



The miniBOOSTER Valve Housing is used for mounting various accessory components directly to the miniBOOSTER.

This saves space and reduces the cost of using stand alone components for these functions.

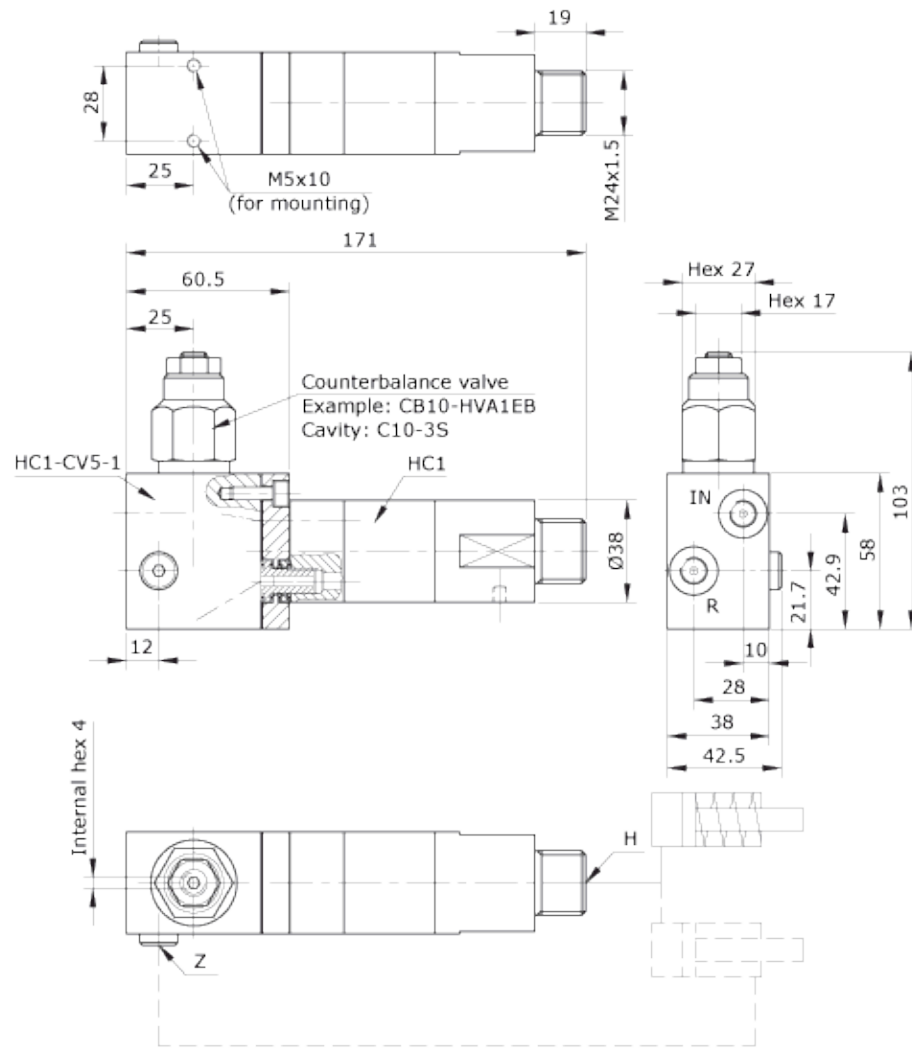
The valve housing and components selected will be factory mounted, tested and sized based on the model of miniBOOSTER selected. Housing material, aluminum.

### ▲ Description

The CV5 incorporates a sequence valve which allows fast forward movement of a cylinder, by directing the full inlet flow to pass directly through the miniBOOSTER until the set pressure has been reached. Hereafter the sequence valve opens and the booster starts oscillating. The unit will automatically stall when end pressure on high pressure side H is reached.

## Valve Housing CV5 for HC1

▲ Dimensions for connections type 1 & 2 (BSP and UNF)

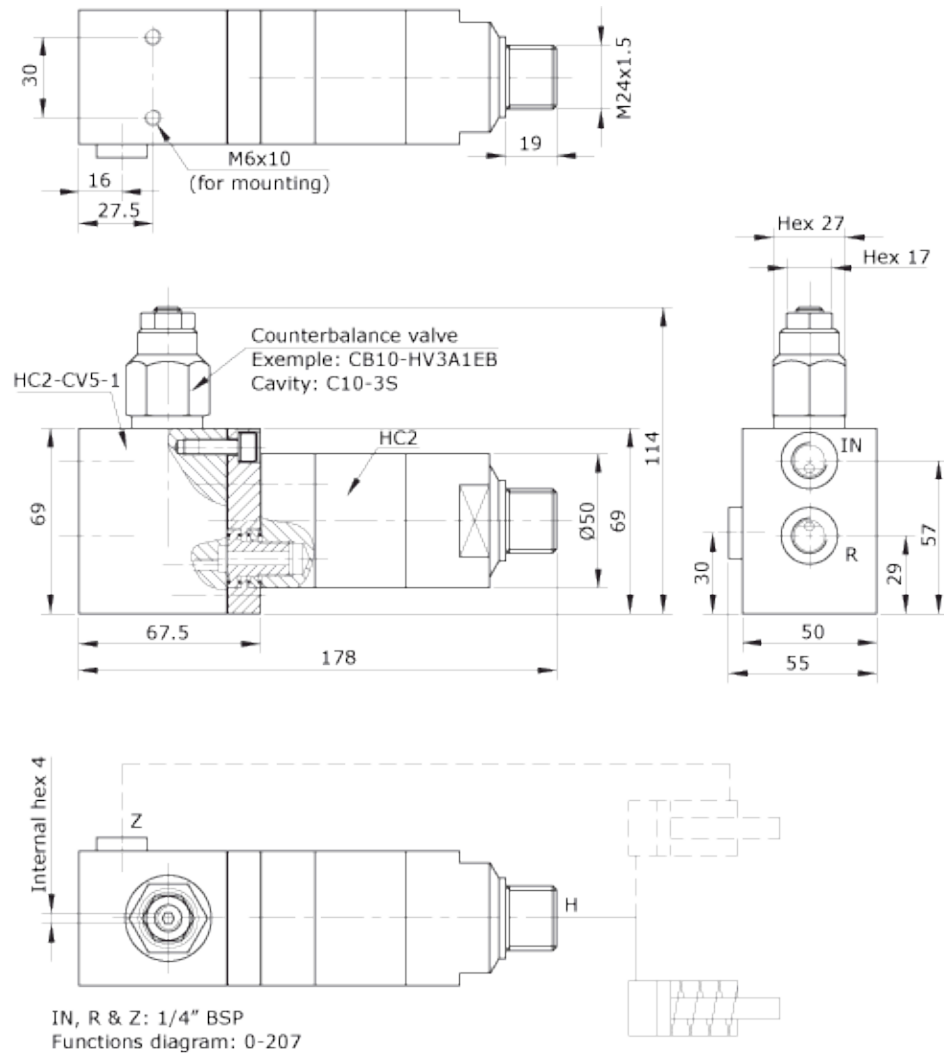


Connections:  
IN, R & Z: 1/4" BSP  
Functions diagram: 0-230

0-348 / Issue 2

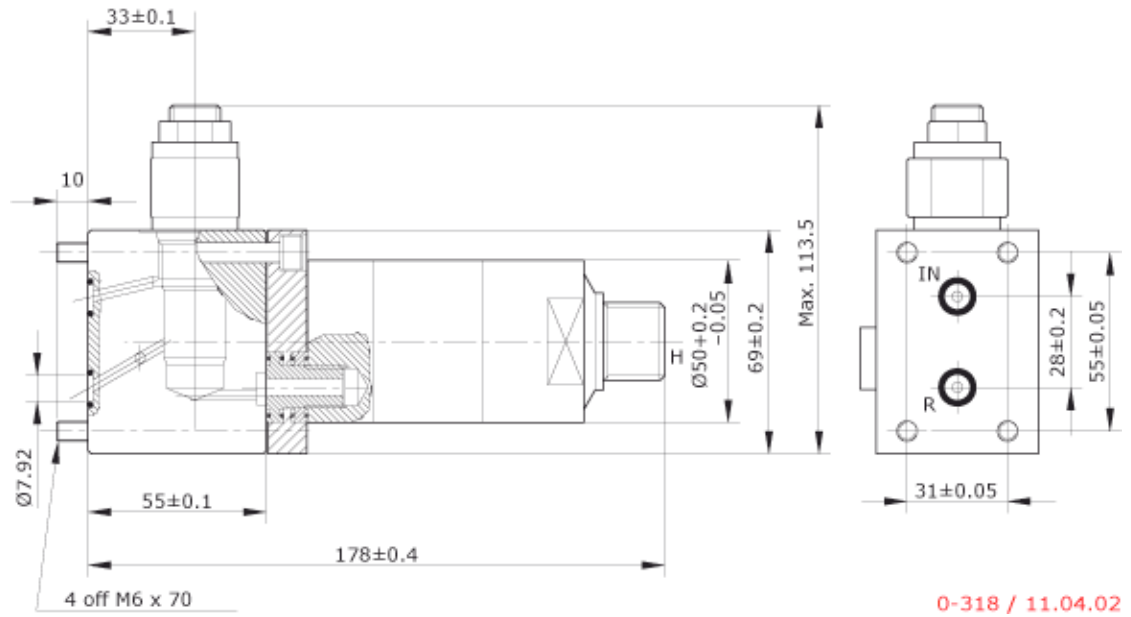
## Valve Housing CV5 for HC2

▲ Dimensions for connections type 1 & 2 (BSP and UNF)

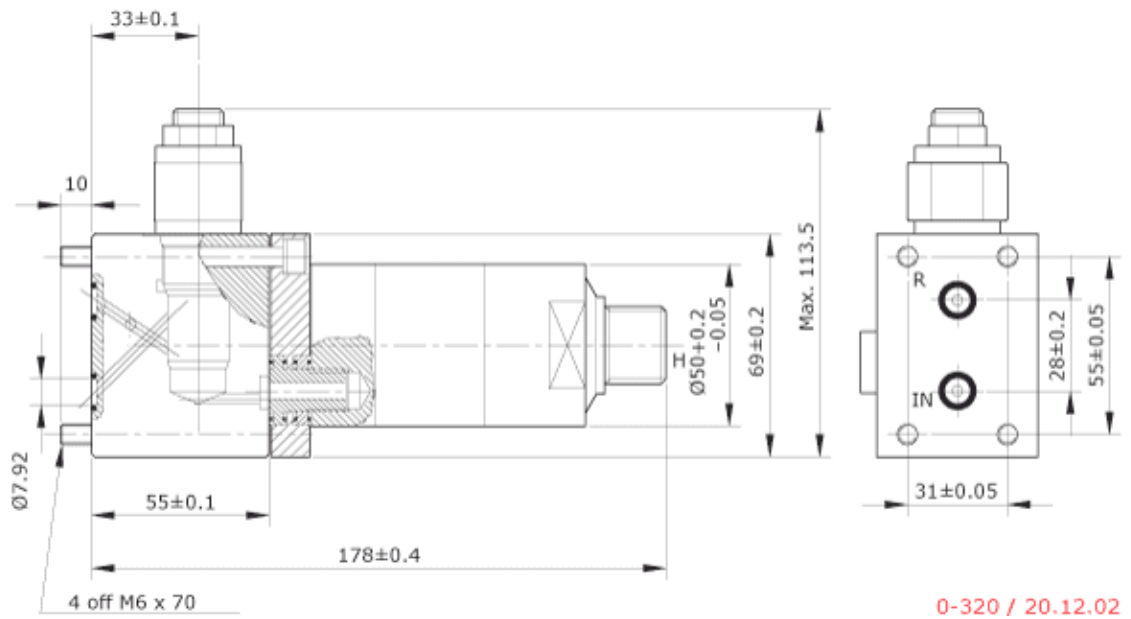


0-317 / Issue 1

▲ **Dimensions for connection type 3 (flange straight)**

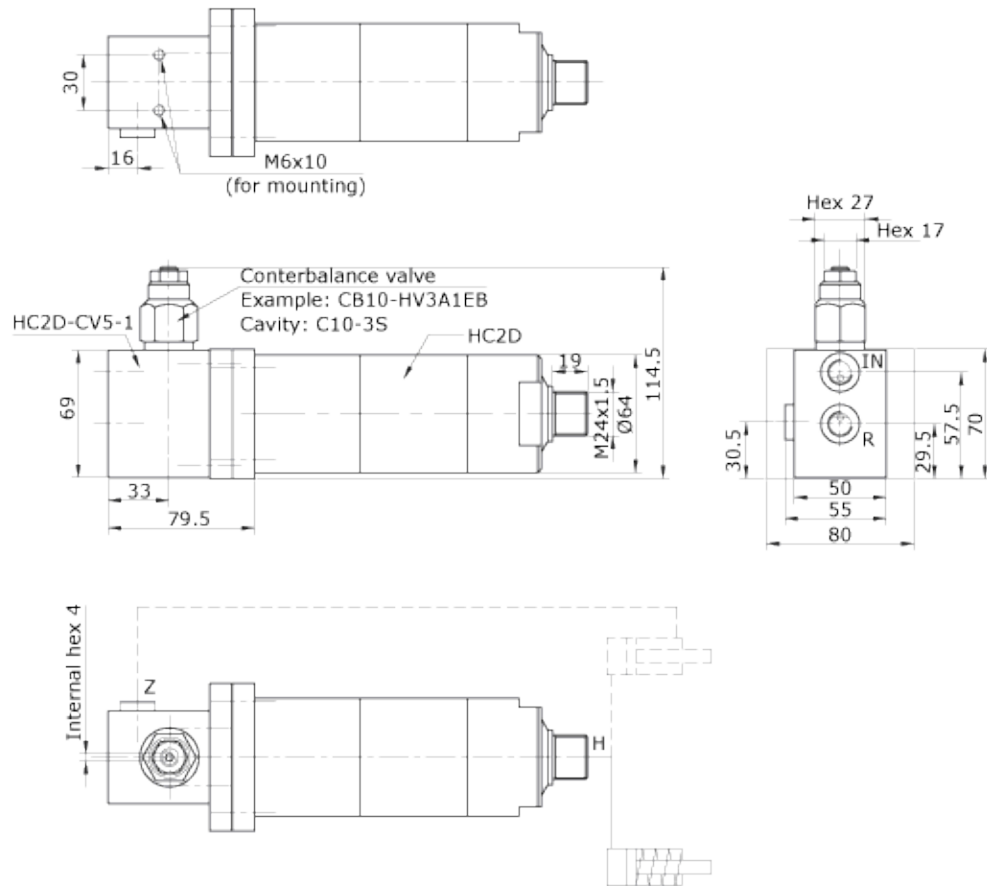


▲ **Dimensions for connection type 4 (flange crossed)**



## Valve Housing CV5 for HC2D

▲ Dimensions for connections type 1 & 2 (BSP and UNF)

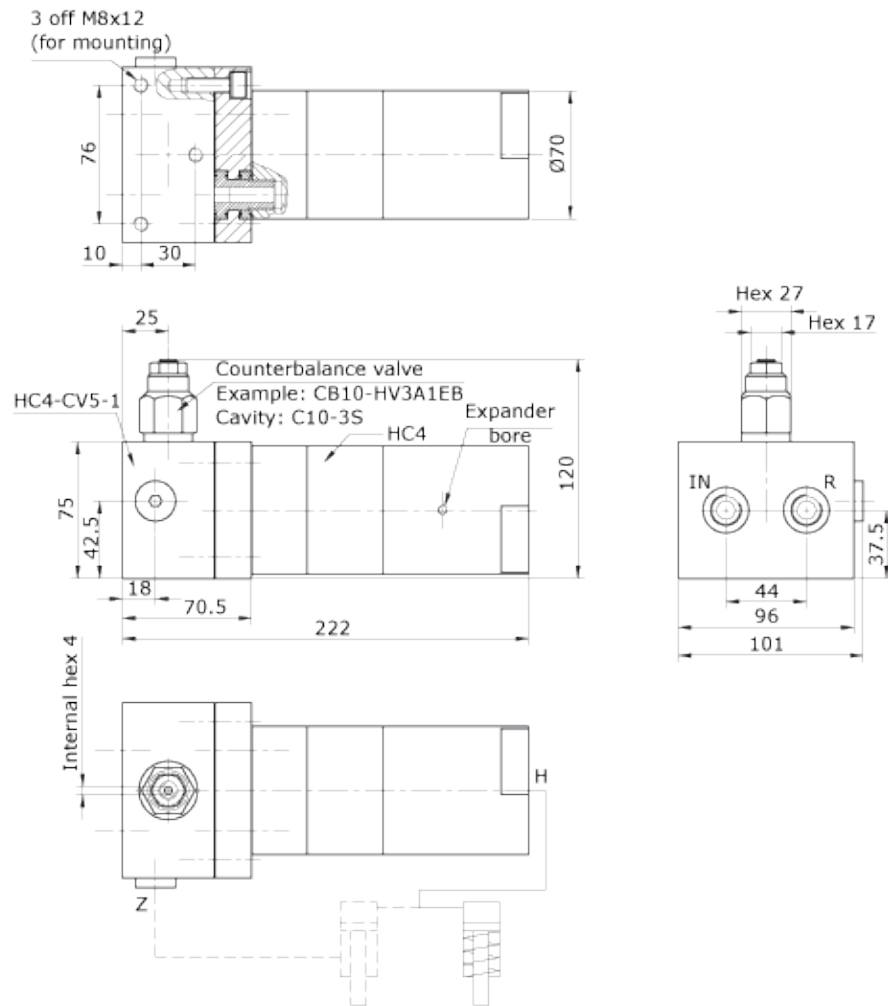


Connections:  
IN, R & Z: 1/4" BSP  
Functions diagram: 0-272

0-360 / Issue 1

## Valve Housing CV5 for HC4

▲ Dimensions for connections type 1 & 2 (BSP and UNF)

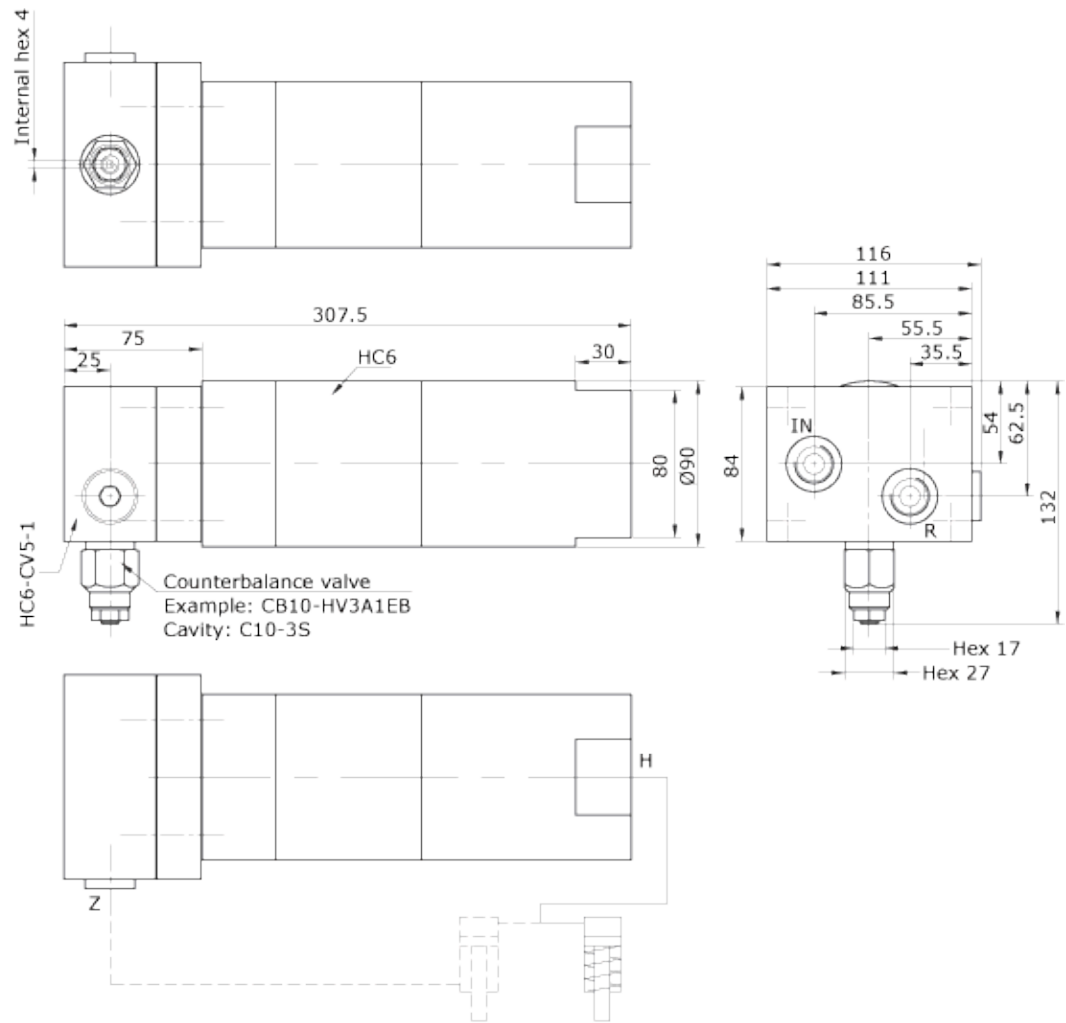


Connections:  
IN, R & Z: 3/8" BSP  
H: 1/2" BSP  
Functions diagram: 0-207

0-358 / Issue 2

## Valve Housing CV5 for HC6

▲ Dimensions for connections type 1 & 2 (BSP and UNF)

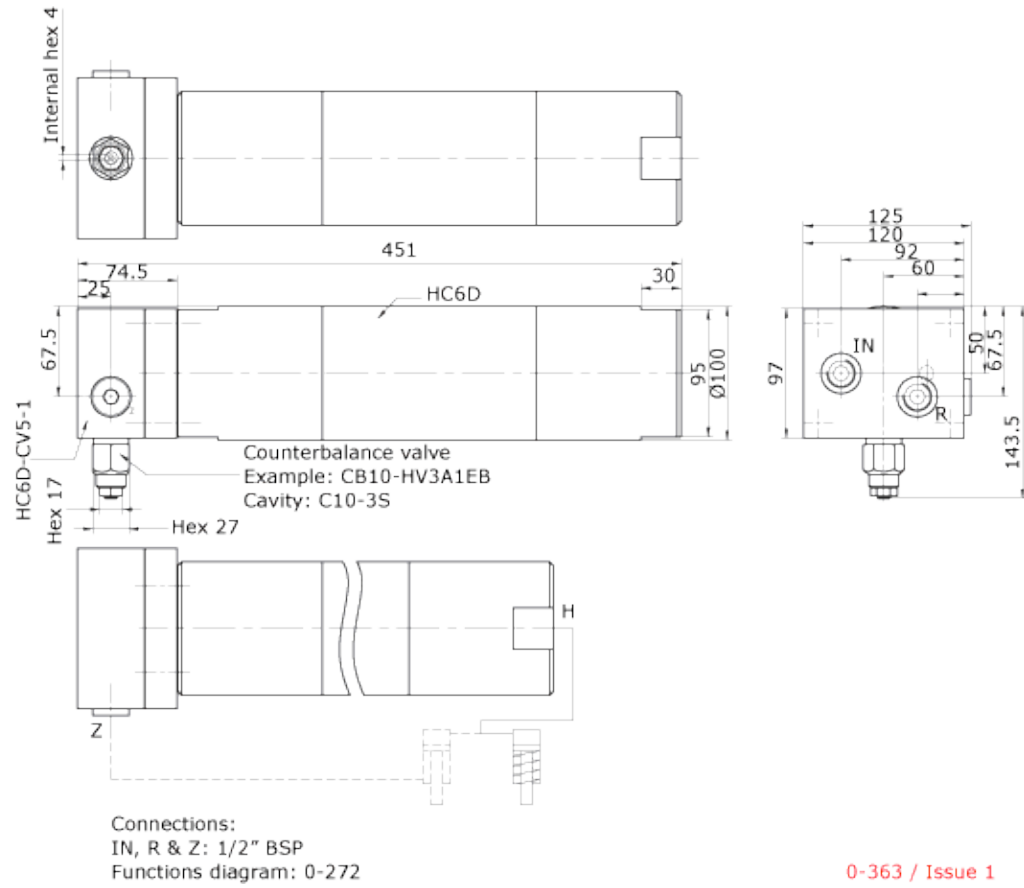


Connections:  
IN, R & Z: 1/2" BSP  
Functions diagram: 0-207

0-364 / Issue 1

## Valve Housing CV5 for HC6D

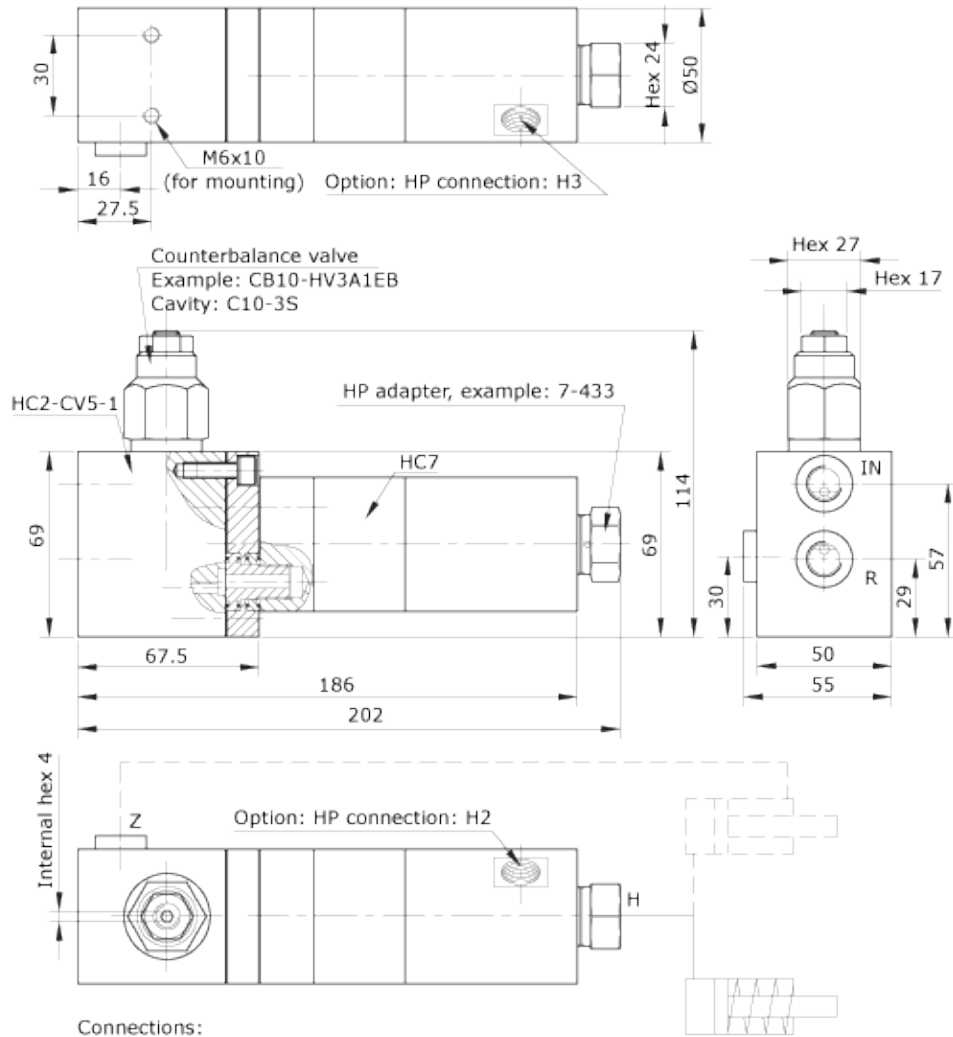
▲ Dimensions for connections type 1 & 2 (BSP and UNF)



0-363 / Issue 1

## Valve Housing CV5 for HC7

▲ Dimensions for connections type 1 & 2 (BSP and UNF)



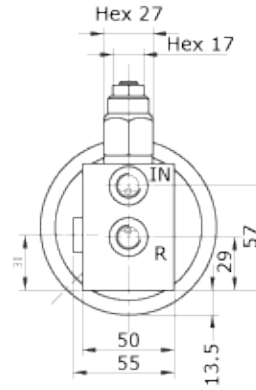
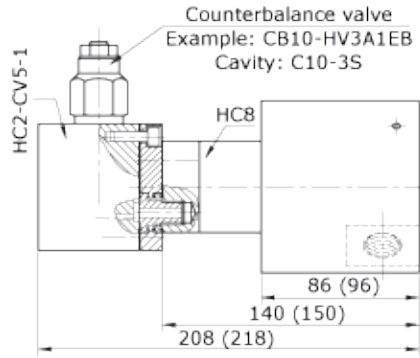
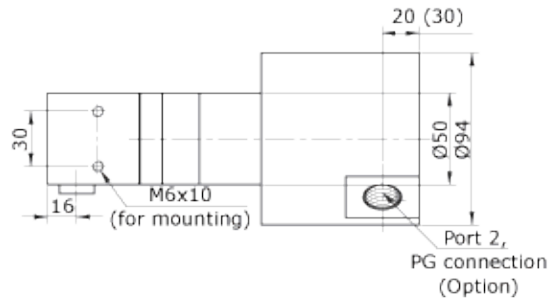
Connections:  
IN, R & Z: 1/4" BSP  
H: 1/4" BSP, 120° cone  
H2 & H3: 9/16" - 18 UNF

Functions diagram: 0-207

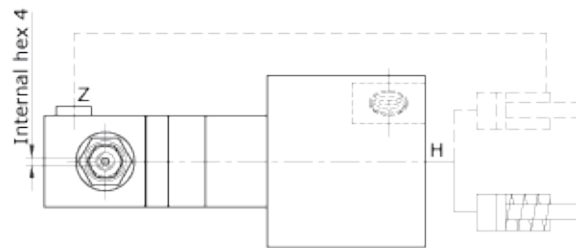
0-367 / Issue 0

## Valve Housing CV5 for HC8

▲ Dimensions for connections type 1 & 2 (BSP and UNF)



Connections:  
IN, R & Z: 1/4" BSP  
Functions diagram: 0-207

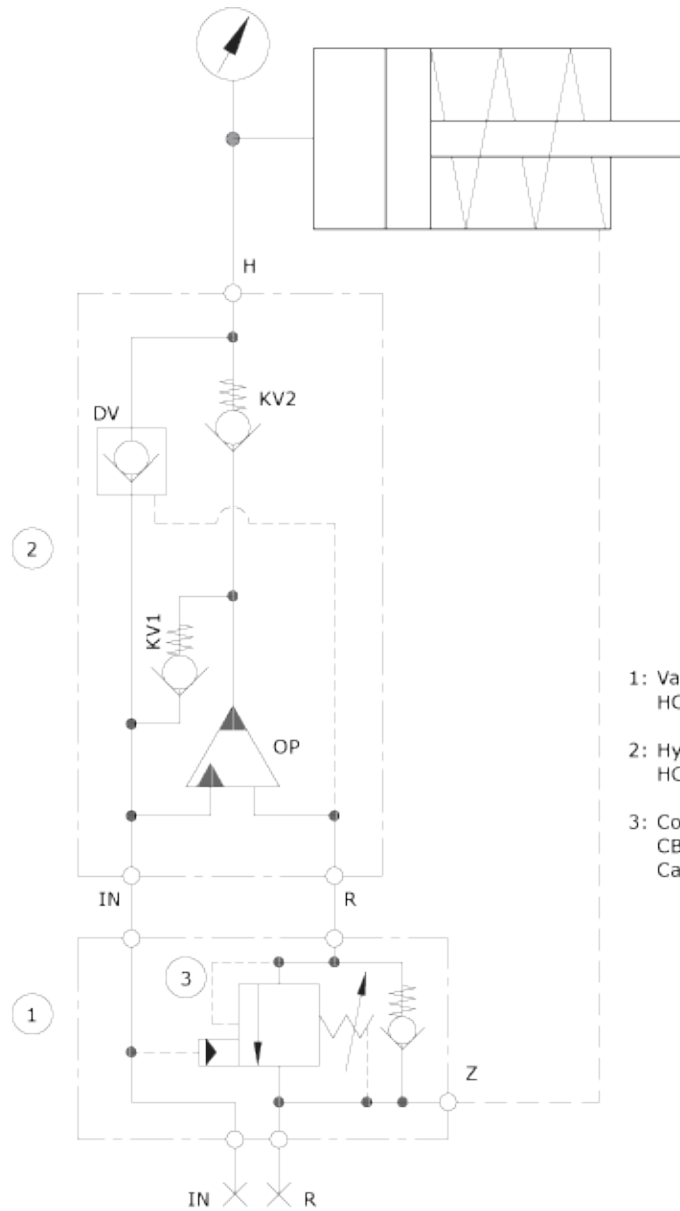


0-368 / Issue 1

▲ **Functions**

*Function Diagram*

1. Housing
2. Sequence Valve (C10-3S Style)
3. HC2, HC2D, HC4, HC6, HC6D, HC7 or HC8



- 1: Valve Housing:  
HC\_\_ - CV5 - \_\_ (Max. 200 bar inlet)
- 2: Hydraulic intensifier:  
HC\_\_ - \_\_ - \_\_ - B - \_\_
- 3: Counterbalance valve:  
CB10-HV3A1EB  
Cavity: C10-3S

▲ **Ordering a Valve Housing CV5**

Example of ordering a complete unit:

1 off Valve housing HC2 - CV5 - 1

1 off Sequence valve CB10-HV3A1EB, cavity: C10-3S

1 off miniBOOSTER HC2 - 4.0 - B - 1

<b>Model</b>	<b>Valve House</b>	<b>Connections</b>
your selection...	CV5	your selection...
HC1		1 = 1/4" BSP
For HC2, HC7 and HC8		1 = 1/4" BSP
		2 = 7/16 - 20 UNF
		3 = Flange straight
		4 = Flange crossed
HC2D		1 = 1/4" BSP
HC4		1 = 3/8" BSP
HC6 and HC6D		1 = 1/2" BSP

