



See examples of applications within:

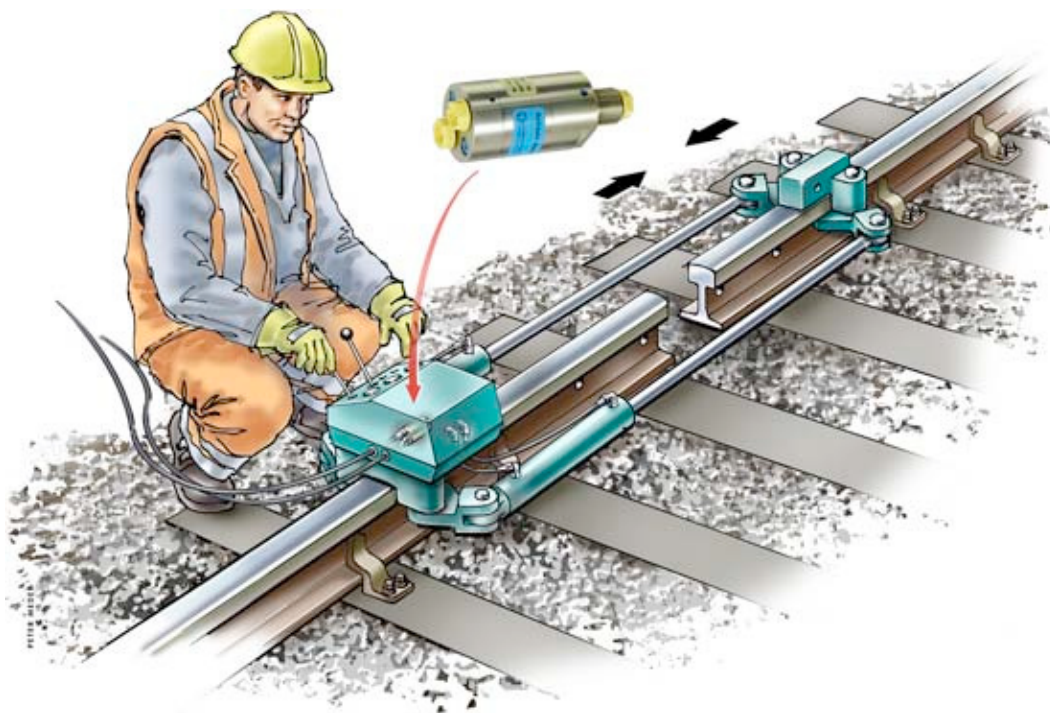
- Rescue
- Mobile
- Offshore
- Power packs
- Work holdings

## Railroad Applications



miniBOOSTER is commonly used in railroad maintenance work, offering an inexpensive and reliable way of obtaining 700 bar high pressure.

Based on existing hydraulic power sources providing 120–160 bar miniBOOSTER generates the high pressure for: Pulling/pushing tracks apart for welding, lifting the tracks and bending the rails.



### Well-proven applications:

- Rail Road Stretchers
- Cutting Tools
- Power Packs
- Crimping Tools

ISO 9001  
BUREAU VERITAS  
Certification

