

Protect your Subsea Tooling

The HC2W-CV2W-1 Valve Housing is a dedicated solution providing a stable and well-defined output pressure for your tooling system, regardless of pressure inlet settings of the ROV valve pack.

The HC2W-CV2W-1 is the new compact miniBOOSTER Valve Housing, designed to be mounted directly on your HC2W stainless-steel intensifier.

Additional benefits are:

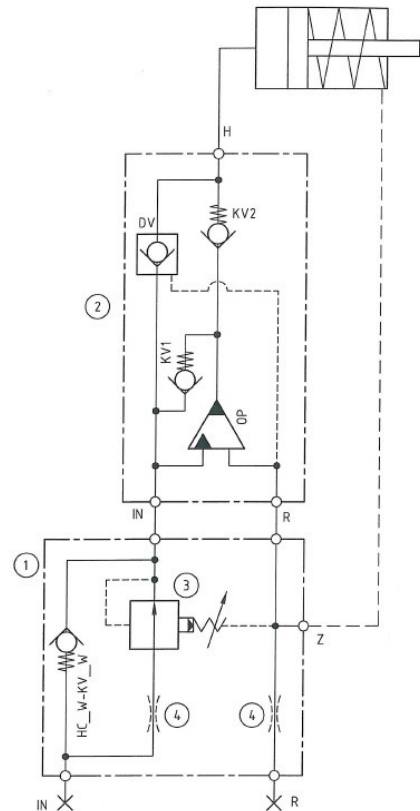
- Protect the tooling from excessive flows and pressures.
- Stabilise the pressure and force, regardless of pressure changes in tank line.

The integrated pressure-reducing valve is tank line-compensated, and ensures that pressure to your booster IN port is well balanced for pressure changes in the tank line.

| Main valve | Standard materials |
|-------------------------|--------------------------|
| Valve Housing | 316L stainless steel |
| Pressure-reducing Valve | External stainless steel |
| | Internal coated steel |

The HC2W-CV2W-1 is supplied tested, preset and locked from miniBOOSTER, so any damage for misuse of settings is easily identified.

Please have a look at the systems: www.minibooster.com.



1. HC2W-CV2W-1 Valve Housing
2. HC2W miniBOOSTER
3. Pressure Reducing Valve
4. Orifice (Optional)

