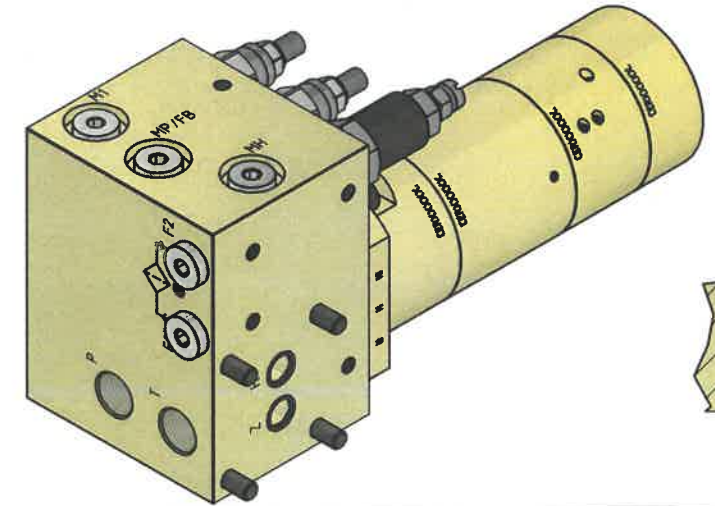
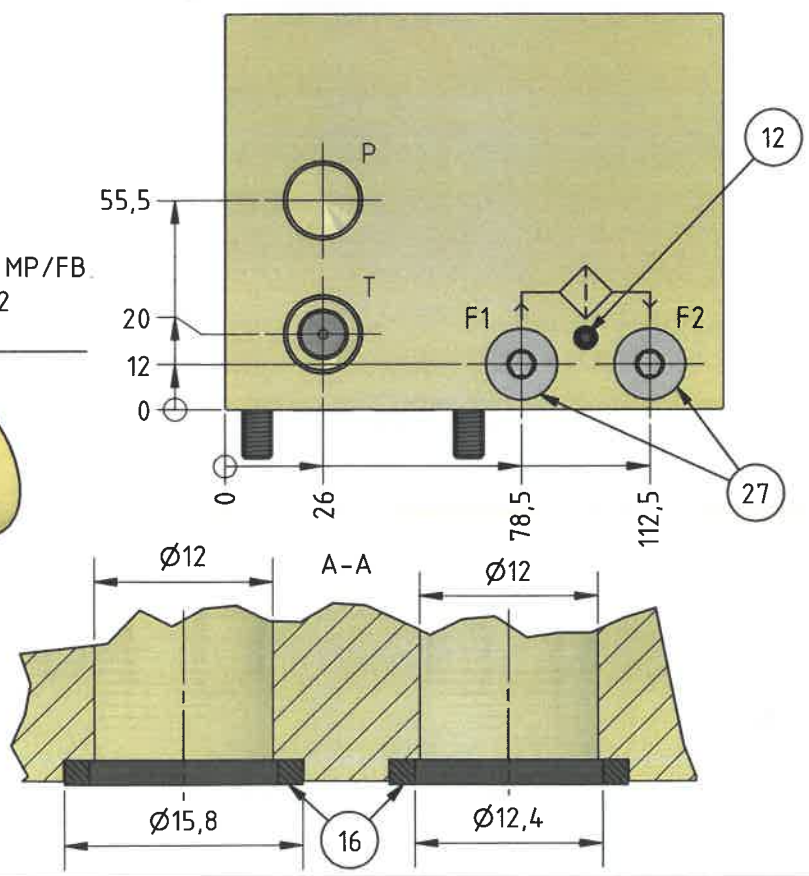


**Port Connections:**  
 P & T: 1/2" BSPP  
 H & Z: Section view A-A  
 M1, MP/FB, MH, F1 & F2: 1/4" BSPP

**Filter Installation Guide:**

- Plug installation position for bypass of oil to filter connection F1 & F2.
- Remove plug 12 from rest position
  - Install plug 12 behind plug 27 in port connection MP/FB
  - Remove plugs (27) from port connections F1 & F2
  - Install filter between port connections F1 & F2



**PARTS LIST**

ITEM	QTY	PART NUMBER	DESCRIPTION	SW1	SW2
1	1	HC4-__-A-D4	Hydraulic Booster		
2	1	3-067	Manifold		
4	1	W-SP11A-30CL	Sequence Valve (10.5-420 bar)	22mm_7/8" ~ 47 Nm	Int. hex 4mm / 14.3mm
5	1	W-PB11A-30AL	Pressure Reducing Valve (7-210 bar)	22mm_7/8" ~ 47 Nm	Int. hex 4mm / 14.3mm
6	1	MVE 4 A	Relief Valve (0-700 bar)	27mm ~ 80 Nm	Slotted / 13mm
12	1	4-621	Bypass Plug M6x6 DIN 913		
16	2	3-610	K.S.BU7 12,4x15,78x1,68 NB90		
27	5	2-630	Plug 1/4" BSPP incl. seal	Int. hex 6mm ~ 30 Nm	
100	4	2D-614	Bolt M8x110 12,9 DIN 912	Int. hex 6mm ~ 38 Nm	

Material		Issue	Material Code No.
Changes		Date	Name
			Finish
			Break all edges
			Hardening depth
			HV

Designer	Leif Hansen	Scale	1 : 2	M-HC4D4-013-FL100 Intensifier System Assembly Drawing	<small>Confidential: Property of miniBOOSTER HYDRAULICS A/S Denmark Not to be handed over to, copied or used by third party.</small> 
Approved by		Format	A3		
Date	11-10-2023				
					Drawing No.: M-HC4D4-013-FL100-00